

***Mamibot***

**W120 iGLASSBOT™**

**Robot Window Cleaner**

**USER MANUAL**

**V.20170410**

# Contents

<b>1. Important Safety Instructions and Warning</b>	<b>3</b>
1.1 Note	3
1.2 Safety Information	3
1.3 Risk of Electric Shock	4
1.4 Warning	4
<b>2. Product Description &amp; Parameters</b>	<b>5</b>
2.1 Product Diagram	5
2.2 Product Parameters	6
2.3 What's in the Package	6
2.4 Remote Control	6
<b>3. Installation</b>	<b>7</b>
3.1 Assemble the Adapter	7
3.2 Fix the Safety Rope	7
3.3 Attach Cleaning Pad	7
3.4 Connect to Power Supply	8
<b>4. Operate W120</b>	<b>8</b>
4.1 On/Off Button	8
4.2 Start Your W120	8
4.3 Stop/Pause	8
4.4 Use of Remote Control	8
4.5 Take off W120 after Cleaning	9
4.6 Use APP on Your Smartphone	9
<b>5. Maintenance</b>	<b>9</b>
5.1 Cleaning Pad Maintenance	9
5.2 Fan Maintenance	9
5.3 Edge Sensors Maintenance	9
5.4 Driving Treads Maintenance	9
<b>6. Troubleshooting</b>	<b>10</b>
<b>7. Disclaimer</b>	<b>11</b>
<b>8. Product Warranty</b>	<b>11</b>
<b>9. Exclusions</b>	<b>11</b>
<b>10. The Environment</b>	<b>11</b>

Thanks for purchasing Mamibot W120 iGLASSBOT robot window cleaner. We wish it brings you easier and more comfortable experience of home cleaning.

# 1. Important Safety Instructions and Warning

## 1.1 Note! - Read all documents before using

The appliance is not to be used by children. Persons with reduced physical, sensory or mental capabilities, or lack of experience and knowledge may only use this appliance if they are supervised or have been given instruction about how to use it safely and understand what risks are involved. Children should be supervised to ensure they do not play with the robot.

!!! The appliance is for window cleaning with frames (frameless glass / window cleaning is not applicable). Users should judge and use it safely on proper operation sites, and be responsible for all possible consequences.

## 1.2 Safety Information

Application of Power Adapter and Batteries

- ▶ Use only the power adapter supplied with this device. Use of other type of power adapter will result in malfunction and / or danger.
  - ▶ Please use the proper electric outlet and make sure no heavy objects are placed on the power adapter or power cord.
  - ▶ Allow adequate ventilation around the adapter when using it to operate the device. Do not cover the power adapter with objects that will reduce cooling.
- Do not use the adapter in a high moisture environment. Never handle the adapter with wet hands.
- ▶ Connect the adapter to a proper power source. The voltage requirements are found on the adapter.
  - ▶ Do not use broken adapter, power cord or plug. The plug must be removed from the receptacle before cleaning or maintaining the appliance. Do not unplug the power adapter by pulling on the power cord.
  - ▶ Do not attempt to service the adapter. There are no service parts inside. Replace the whole unit if it is damaged or exposed to high moisture. Consult your Mamibot dealer for help and maintenance.
  - ▶ The battery used in this device may present a risk of fire or chemical burn if mistreated. Do not disassemble, short contact, heat above 60 °C (140 °F), or incinerate.
  - ▶ If you have to dispose of this old equipment, please take it to the local recycling center for recycling electrical and electronic parts.
  - ▶ Retain the safety and operating instructions for future reference.
  - ▶ Follow all operating and use instructions.
  - ▶ Do not expose your device to rain or excess humidity, and keep it away from liquids (such as beverages, faucets, and so on).
  - ▶ Avoid exposing your device to direct sunlight or intense light source, and keep it away from heat source (such as radiators, space heaters, stoves, and so on).
  - ▶ Do not place the device in the vicinity of strong magnetic fields.
  - ▶ Keep the device and accessories away from children.
  - ▶ Product operating temperature: 0 °C ~ 40 °C (32 °F ~ 104 °F).
  - ▶ Don't use it on cracked glass or to clean other surface with uneven area as it may fall off due to insufficient suction power.
  - ▶ The back-up battery must be replaced by the manufacturer or its service agent in order to avoid a hazard. The back-up battery must be removed and discarded according to local laws and regulations before disposal of the appliance. Please dispose of used batteries according to local laws and regulations.
  - ▶ The appliance must be disconnected from the receptacle before removing the battery for disposal of the appliance.
  - ▶ The appliance must be used in accordance with the directions in this instruction manual. Product manufacturer cannot be held liable or responsible for any damages or injuries caused by improper use.

# 1. Important Safety Instructions and Warning

## 1.3 Risk of Electric Shock!

- ▶ Always switch the device off before carrying out any cleaning or maintenance work.
- ▶ Never pull the power plug out of the socket by the power cord; instead, pull it out by the power plug itself.
- ▶ Never perform repairs on your device yourself. Repairs to electric devices may only be carried out by authorized customer service center.
- ▶ Do not insert any pointed objects into the electric contacts.
- ▶ Do not change the contacts.
- ▶ Do not continue to operate the robot if the device itself or the power cord is damaged.
- ▶ Contact your local customer service in the event of damage.
- ▶ Do not clean the robot, the power cable in water or other liquids.
- ▶ Do not use the robot on damp ground or in places in which it can get into contact with liquids or be immersed in water.
- ▶ Do not use the robot in hazardous areas such as open fireplaces, running showers or swimming pools.
- ▶ Make sure that you do not damage, bend or twist the power cord. Do not place any heavy objects on top of the cord. This could damage the power cord and cause a fire or electrical shock.

## 1.4 Warning



1. Fasten the safety rope and tie to indoor fixture before operating the device.
2. Check if the safety rope is broken or the knot is loose before operating the device.
3. Set danger-warning area downstairs for no-balcony window and door.
4. Battery shall be full-charged (Orange lamp ON) before using.
5. Do not use it on rainy or moist days.
6. Turn power on before you put device onto glass.
7. Make sure the device can stick and stand on glass surface while put onto glass.
8. Before turn power off, please hold the device.
9. Do not use it on frameless glass.
10. Make sure to put the cleaning pad on the bottom of the device correctly for no leakage.
11. Do not spray or pour water onto the device.
12. Prohibit children from using this device.
13. Remove everything on the glass. Do not use on cracked glass. Reflective or coating glass might be slightly scratched due to dirt on the glass while operating.
14. Keep hair, loose clothing, fingers, and all parts of body away from the openings and moving parts.
15. Do not use in areas with existed flammable or combustible liquids, gas.

### Scan QR Code for APP downloading from here

#### iOS System:

Requires iOS 7.0 or later. Compatible with iPhone iPad, and iPod touch.

#### Android System:

Requires Android 4.3 or later, bluetooth 4.0 or later.

#### Notes:

Make sure the W120 is switched on before connecting; If it is not connected successful, turn off the APP from device background, try again later.

#### Android System



iGLASSBOT

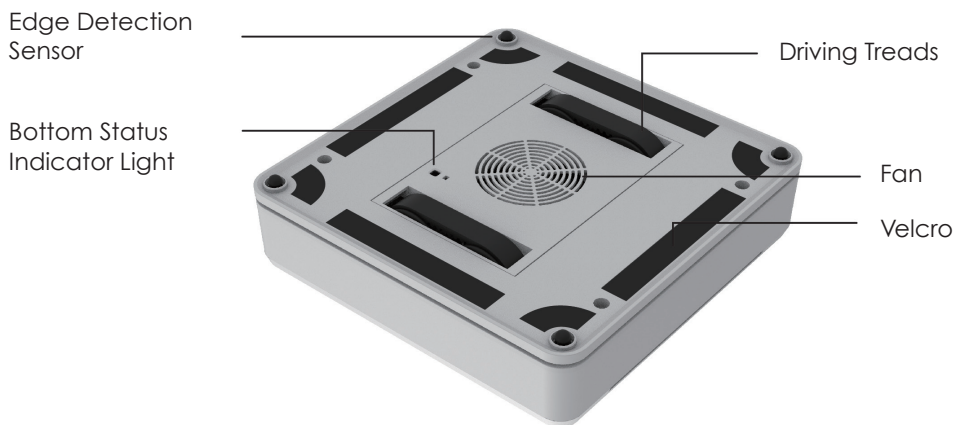
#### iOS System



iGLASSBOT

## 2. Product Description & Parameters

### 2.1 Product Diagram



## 2. Product Description & Parameters

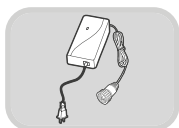
### 2.2 Product Parameters

About The Robot			
Model No.	W120	Rated Voltage	24 V DC
Rated Power	75 W	Noise Level	About 65 dB
Battery Capacity	650 mAh	Charging Time	About 1 h
Dimension	25 x 25 x 8 cm	Net Weight	1.35 kgs
Cleaning Speed	About 2.5 min / m <sup>2</sup>		
Adapter			
Input	AC 100-240 V 50 / 60Hz 2.0 A	Output	24 V / 2.5 A

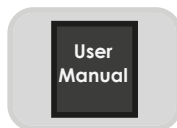
### 2.3 What's in the Package?



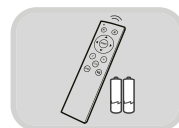
W120



Adapter



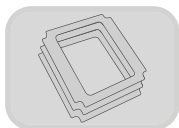
User Manual



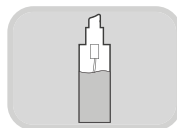
Remote Control



Extension Cable



Cleaning Pads



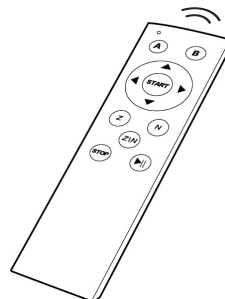
Cleaning Solution



Safety Rope

### 2.4 Remote Control

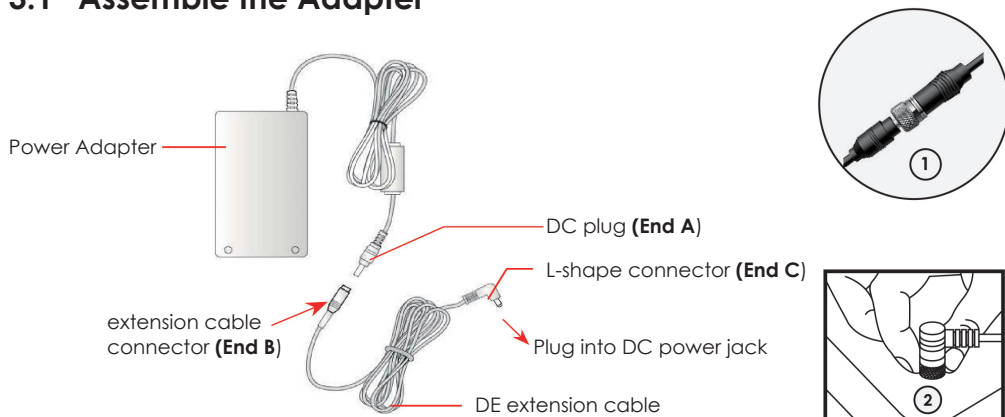
Automatically "Z" Type Cleaning	Manual Move UP
Automatically "N" Type Cleaning	Manual Move Down
From "Z" to "N" Cleaning	Manual Move Right
No Use Yet	Manual Move Left
No Use Yet	Start Cleaning Choose "Z" or "N" type automatically
Stop Cleaning	Stop / Restart



It is 2.4 G wireless remote control, which can control your robot within maximum 15 meters away from any direction.

### 3. Installation

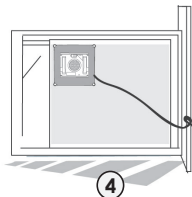
#### 3.1 Assemble the Adapter



- A. Connect DC plug **(End A)** of Power Adapter with extension cable **(End B)**, as above. **(1)**
- B. Connect **End C** to the robot power socket, screw the connector until it's tightly locked. **(2)**

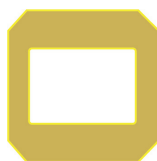
#### 3.2 Fix the Safety Rope

- A. Put the safety rope through the handle and make a tight knot. **(3)**
- B. Tie the other end of the rope to indoor fixture securely. **(4)**



#### 3.3 Attach Cleaning Pad

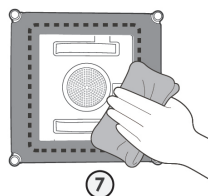
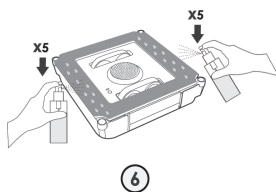
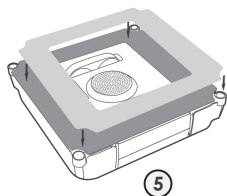
- A. Choose the proper cleaning pad for your window.
- B. Attach the cleaning pad to W120 bottom properly, the pad should not cover driving treads or edge sensors. **(5)**
- C. Spray 5 times of cleaning solution to the upper and lower side of W120. **(6)** wipe the bottom after spraying. **(7)**



Yellow Cleaning Pad for glass with heavy dirt / dry cleaning



Gray Cleaning Pad for glass with light dirt / wet cleaning



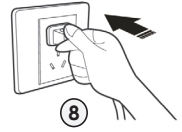
### 3. Installation

#### 3.4 Connect to Power Supply

Plug in W120. ⑧

##### Important Notes:

Be sure your W120 is always connected to AC power supply while working. Don't use it if the backup battery is lack of power, use it after full charging. Take off your W120 asap, if the power supply is cut or unplugged accidentally.



### 4. Operate W120

#### 4.1 On/Off Button

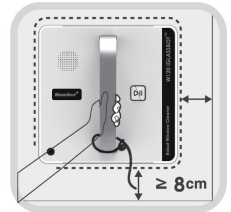
- A. Power On/Off button - Press for 2 seconds to turn on/off your W120.
- B. Press the On/Off button once to start or stop the W120 when it is placed on window.






#### 4.2 Start Your W120

- A. Press the On/Off button for 2 seconds to turn on your W120.
- B. Place your W120 on glass, press again the On/Off button to start.
- C. You can also start it from your remote control "START" button.






**Caution:** Before starting, make sure the edge of W120 is 8 cm or more away from window frames or corners.

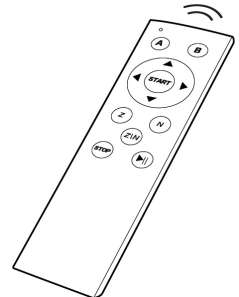


#### 4.3 Stop/Pause

- A. When W120 is cleaning, press On/Off  button on the device or the Stop  button on remote control to stop it.
- B. When W120 is cleaning, press Pause  button on remote control to pause/restart it.
- C. You can also start it from your remote control Start  button.

#### 4.4 Use of Remote Control

 Automatically "Z" Type Cleaning	 Manual Move UP
 Automatically "N" Type Cleaning	 Manual Move Down
 From "Z" to "N" Cleaning	 Manual Move Right
 No Use Yet	 Manual Move Left
 No Use Yet	 Start Cleaning Choose "Z" or "N" type automatically
 Stop Cleaning	 Stop / Restart





## 4. Operate W120

### 4.5 Take off W120 after cleaning

W120 will return to its starting point automatically after cleaning is finished. There is beep warning when cleaning is completed.

- Use remote control to move your W120 to a reachable location;
- Press On/Off Button for 2 seconds to switch it off;
- Grasp the handle and take it off from the window;
- Untie the safety rope after finishing cleaning. Put the device and its spare parts in dry condition for future use.

### 4.6 Use APP on Your Smartphone

- Download App for your iOS/Android device (refer to page 2 to scan and download, or search for "iGlassbot" in your Appstore or googleplay).
- Turn on BLUETOOTH on your cellphone, and open iGLASSBOT APP on your phone.
- Click the BLUETOOTH ICON on your iGLASSBOT interface to search device, and connect your W120 with your phone, you can control it through cellphone now.

## 5. Maintenance

### 5.1 Cleaning Pad Maintenance

Put your W120 up-side-down, take off the cleaning pad and put it into cold water, wash the cleaning pad with detergent and dry it for reuse.

**Note:** wet cleaning pad is not suggested to be used as it may get your robot stuck when cleaning glass with heavy dirt.

### 5.2. Fan Maintenance

Put your W120 up side-down, use a clean and dry cloth to wipe out dirt/debris on the fan.

### 5.3 Edge Sensors Maintenance

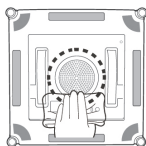
Put your W120 up side-down, use a clean and dry cloth to wipe out dirt/debris of the sensors.

### 5.4 Driving Treads Maintenance

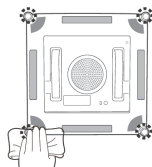
Put your W120 up side-down, use a clean and dry cloth to wipe out dirt/debris on it.



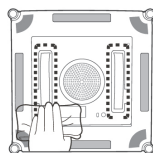
Wash  
Cleaning Pad



Clean Fan



Clean Edge  
Sensors



Clean Driving  
Treads

## 6. Troubleshooting

Malfunction	Possible Causes	Solutions
The device gets slippery or works in irregular patterns.	A. Glass is too dirty or too wet. B. Cleaning pad is too dirty or too wet.	A. Change cleaning pad. B. Clean the driving treads. C. Use remote control to manually restart it.
Insufficient suction power.	Insufficient suction power.	A. Check if the cleaning pad is attached properly, replace it correctly. B. Check if there is any crack on the glass. C. Check if the glass frames are with uneven area/ rubber part. If there is uneven area or uneven rubber part on the glass, use remote control to operate the device manually and keep the W120 away from the uneven area / uneven rubber part when cleaning.
The devices can't be started after switched on, or works in irregular patterns.	Edge detection sensor abnormal.	A. Remove the cleaning pad and reattach it making sure it is placed exactly within its velcro area and does not cover the edge detection sensors. B. Open APP on your phone, connect it with the robot and find out if any RED indications on the corners of APP interface (Red indications on the APP interface means the edge sensor is malfunctioned). C. Edge detection sensors failure, contact after-sales service.
Red indicator light flashes, buzzer beeps once/second	Improper connection of Power Supply.	Check if the plug is connected well, or the screws of the extension cables are placed tight.
Both Red and Blue indicator lights flash.	Hardware failure.	Contact after-sales service.
Remote control does not work.	A. No battery inside or battery has low power. B. Remote control is broken.	A. Change the battery. B. Replace the remote control with new one.
The device got stuck on glass frames.	Edge-detection misjudgement.	A. Press STOP on remote control, move the device to reachable location first. B. Pull the robot lightly to reachable location if you can't remote control it.
Both Red and Blue Light on, no beeps.	The device is not sucking properly on window.	Put the device on window surface manually, make sure it sucks on the window properly.
Buzzer beeps twice when it's in use.	Edge sensor detects frameless glass.	It's normal, if it is cleaning frameless glass.
Squeaky sound when it's in use.	Glass is too dry or edge detection sensors are too dirty.	A. Spray a little bit of water on the cleaning cloth. B. Clean the edge detection sensors and operate again.
The device doesn't return to Starting Point after cleaning.	The glass surface's friction index is different.	Use remote control to direct the device return to reachable location.

## 7. Disclaimer

The manufacturer makes no representations or warranties, either expressed or implied, with respect to the contents hereof and specifically disclaims any warranties, merchantability, or fitness for any particular purpose.

Further, the manufacturer reserves the right to revise this publication and to make changes from time to time in the contents hereof without obligation of this company to notify and person of such revision or changes.

The place and safety of this glass cleaning tool usage must be judged and responsible by user. But also need to follow the instructions in this user manual.

## 8. Product Warranty

If there are defects in your W120 glass-cleaning robot due to faulty materials, workmanship or function within warranty period from the date of purchase or delivery, please contact your local retailers or local authorized dealers for repair or replacement.

## 9. Exclusions

This warranty will automatically become null and void and shall not be applicable to any purchased products if:

- ▶ Normal wear and tear (e.g. cleaning cloth, safety rope, etc).
- ▶ Reduction in battery discharge time due to battery age or use.
- ▶ Damage caused by assembling or installing that not in accordance with the instructions of manufacturer.
- ▶ Damage caused by using the glass-cleaning robot for any other purposes than normal domestic household.
- ▶ Damage caused by using parts and accessories which are not specified by the manufacturer.
- ▶ Damage caused by accident, abuse or misuse.

## 10. The Environment



The symbol on this appliance indicates that this appliance may not be treated as household waste. Instead it must be handed over to the applicable collection point for the recycling of electrical and electronic equipment. Disposal must be carried out in accordance with local environmental regulations for waste disposal. For more detailed information about treatment, recovery and recycling of this appliance, please contact your local city office, your household and waste disposal service or the shop where you purchased the appliance.

**CE** This appliance complies with the European Directives 2014/30/EU, 2014/35/EU, and 2014/53/EU. Subject to change without notice.

### **Mamibot Manufacturing USA Inc.**

Orange Street #600, New Castle, Wilmington, Delaware, USA 19899  
www.mamibot.com, sales@mamibot.com, 001 302 428 9888

